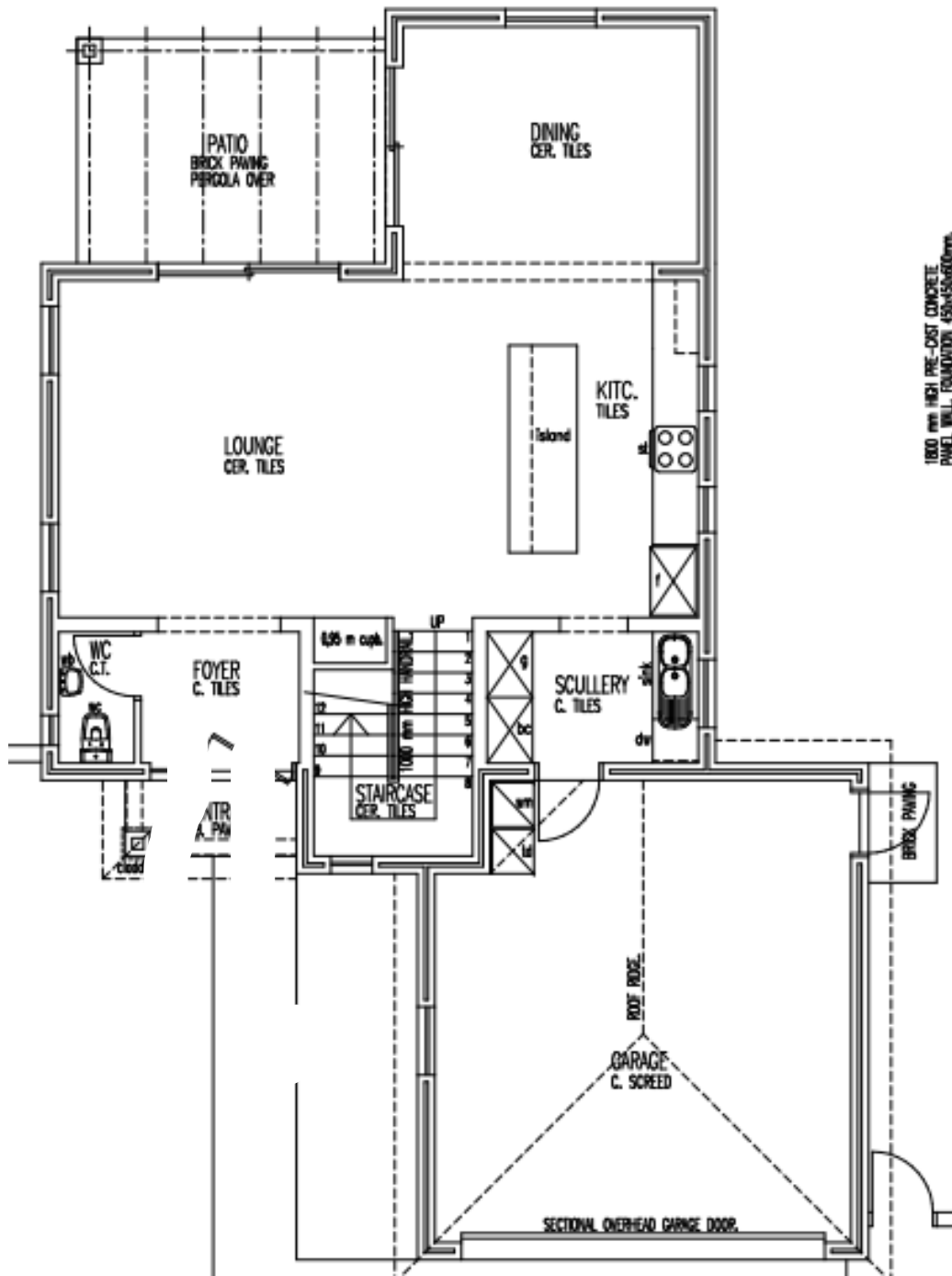
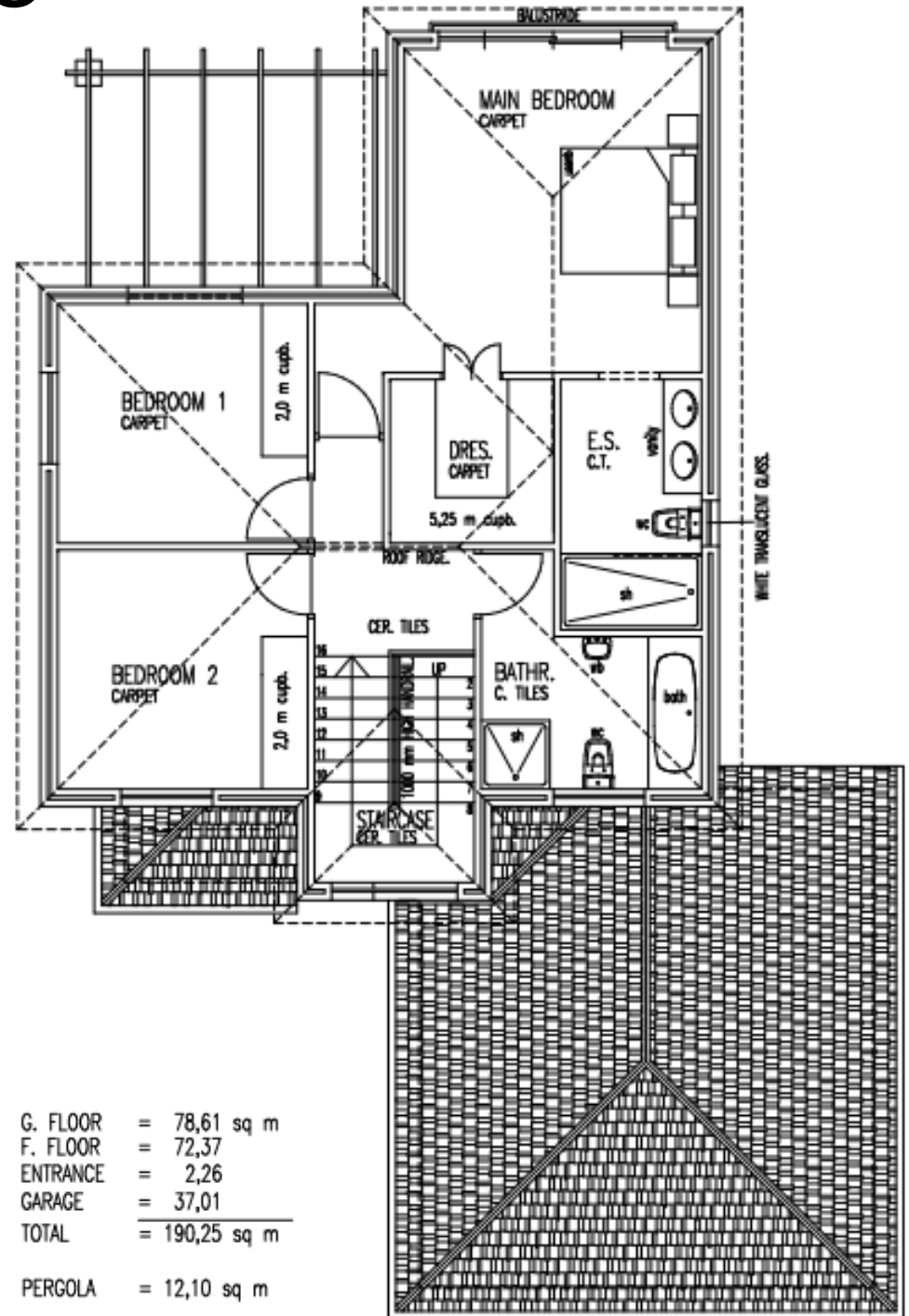


TYPE C



1800 mm HIGH PRE-CAST CONCRETE
PANEL WALL, FOUNDATION 450x450x600mm.



G. FLOOR	=	78,61 sq m
F. FLOOR	=	72,37
ENTRANCE	=	2,26
GARAGE	=	37,01
TOTAL	=	190,25 sq m
PERGOLA	=	12,10 sq m